



## METRO CENTRAL'S ROOF GOES GREEN

We continue to make progress towards the creating a green roof to better utilize space and provide an environmentally friendly update to the facility. The new green roof is a collaborative effort involving ecological design company Natvik Design, Metro Central staff and volunteers.

## CONSULTATION PHASE UPDATE

**We are excited to announce the selection of a final design.**

We would like to thank all the over-2,500 members who participated in the consultation. Over 1,000 members visited the project website or stopped at the consultation display and gave us feedback. Over 100 members have already volunteered to help with the project. This is a wonderful example of our members' sense of belonging and level of involvement.



## THE FINAL DESIGN CHOICE: DESIGN #3

Since May, the YMCA and Natvik Design staff have been collecting members' comments and suggestions on three different design concepts. Overall, Design #3 was the most favoured by the membership.

We received numerous suggestions, and obviously, only so many could be incorporated into the final design. The Project Steering Committee met a number of times to review the feedback. Taking Design #3 as a starting point, we filtered members' suggestions through a two-stage process:

### 1. YMCA CAPITAL PROJECT CATEGORIES

Does the suggestion fall under any of these 4 categories?

- Health and safety
- A planned refurbishment (element nearing the end of its life expectancy)
- A business case supporting the decision (cost/benefit analysis)
- A feature we would like to have

### 2. GREEN ROOF PROJECT DESIGN CRITERIA

(parameters, constraints and objectives outlined as part of the final decision making criteria)

Does the suggestion meet the following criteria?

- 1) Does it meet the structural requirements and constraints of the project?
- 2) Will it be safe?
- 3) Does it fit within the assigned project budget?
- 4) Does it require minimal maintenance?
- 5) Does it promote increased use of the rooftop?
- 6) Will it be accessible to all members?

Based on this process, the membership feedback shaped and refined the final design.

### ADDITIONAL SUGGESTIONS THAT WERE ADDED TO DESIGN #3

- More trees
- Wider pathways in some areas to accommodate anticipated traffic
- Increased seating capacity
- Raised track edging for members who are visually impaired

An example of a recommendation that was not included: adding a tennis court. This suggestion fits under the Capital Project Category, "would like to have," but it did not meet the 5th Project Design Criterion of promoting increased use of the rooftop. A tennis court occupies a significant amount of space, yet serves only four members per booking slot.

We are very excited to be proceeding to the next stage of this wonderful project. Roof repair work will begin June 11. Over the next month, we will be sourcing materials and finalizing the budget. Construction is scheduled to start in August. We will post updates on the website.

<http://www.ymcatoronto.org/en/index.html>

Once again, thank you all for your continued contribution to making the Metro-Central your community YMCA!

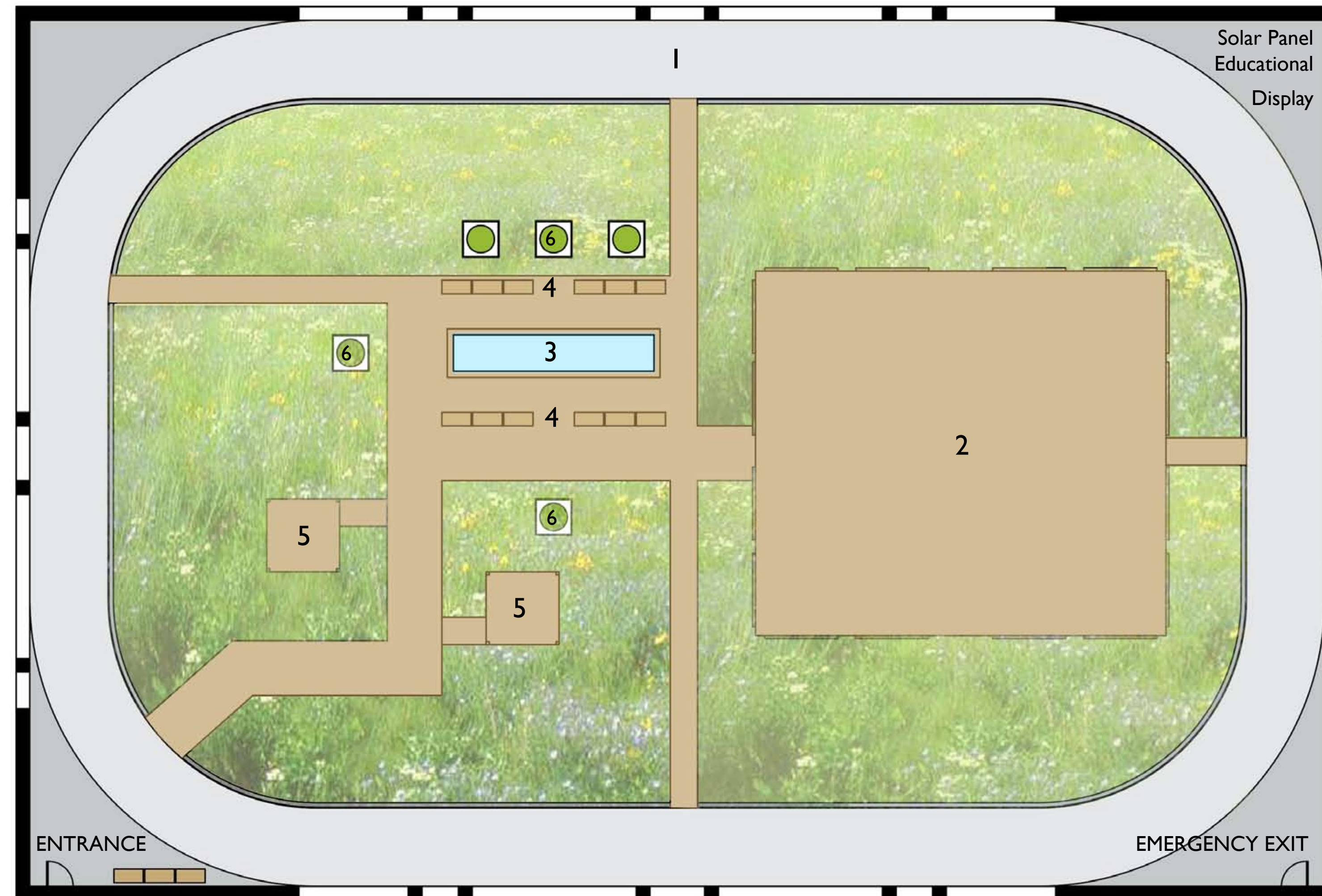
### STEERING COMMITTEE

Marlene Etherington, Project Volunteer Chair  
 Dedric Nelson, General Manager, Metro-Central YMCA  
 Stephanie Uren, Staff Project Chair  
 Al Freeman Facility Manager, Metro-Central YMCA  
 Sheldon Hellin, Volunteer Leadership Council Member  
 Paul Gulesserian, Community Representative, Bay Corridor Community Association  
 Marion McCron, Community Representative, Bay Corridor Community Association  
 Louise Moritsugu, Editor

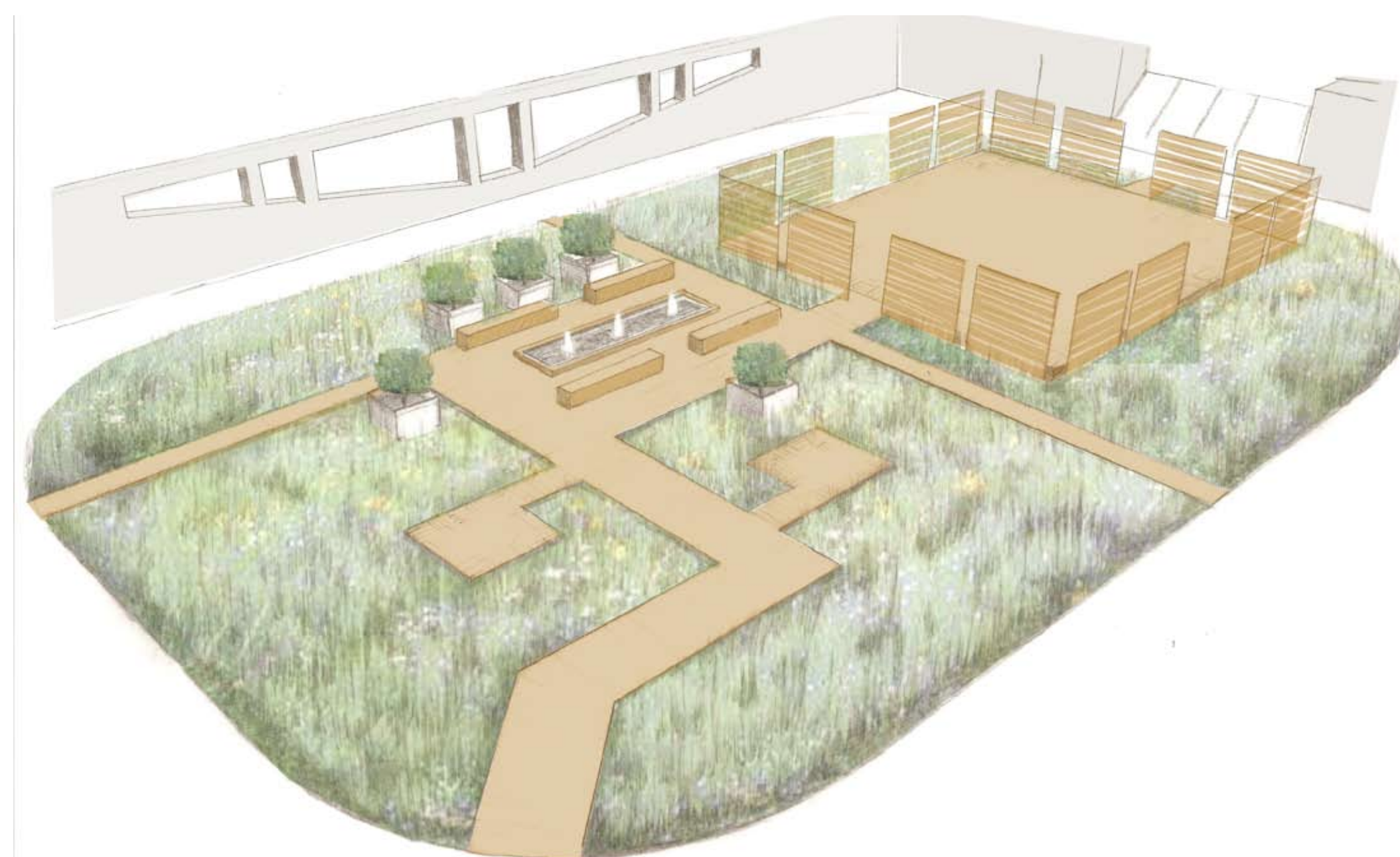
# METRO-CENTRAL TORONTO YMCA GREEN ROOF FINAL DESIGN



Deck with water feature and seating



Main pathway and platforms



Overview of final green roof design

## DESIGN ELEMENTS

1. EXISTING TRACK
2. OUTDOOR STUDIO
3. DECK AND WATER FEATURE
4. BENCHES
5. PLATFORMS
6. TREE PLANTERS



Outdoor studio and deck